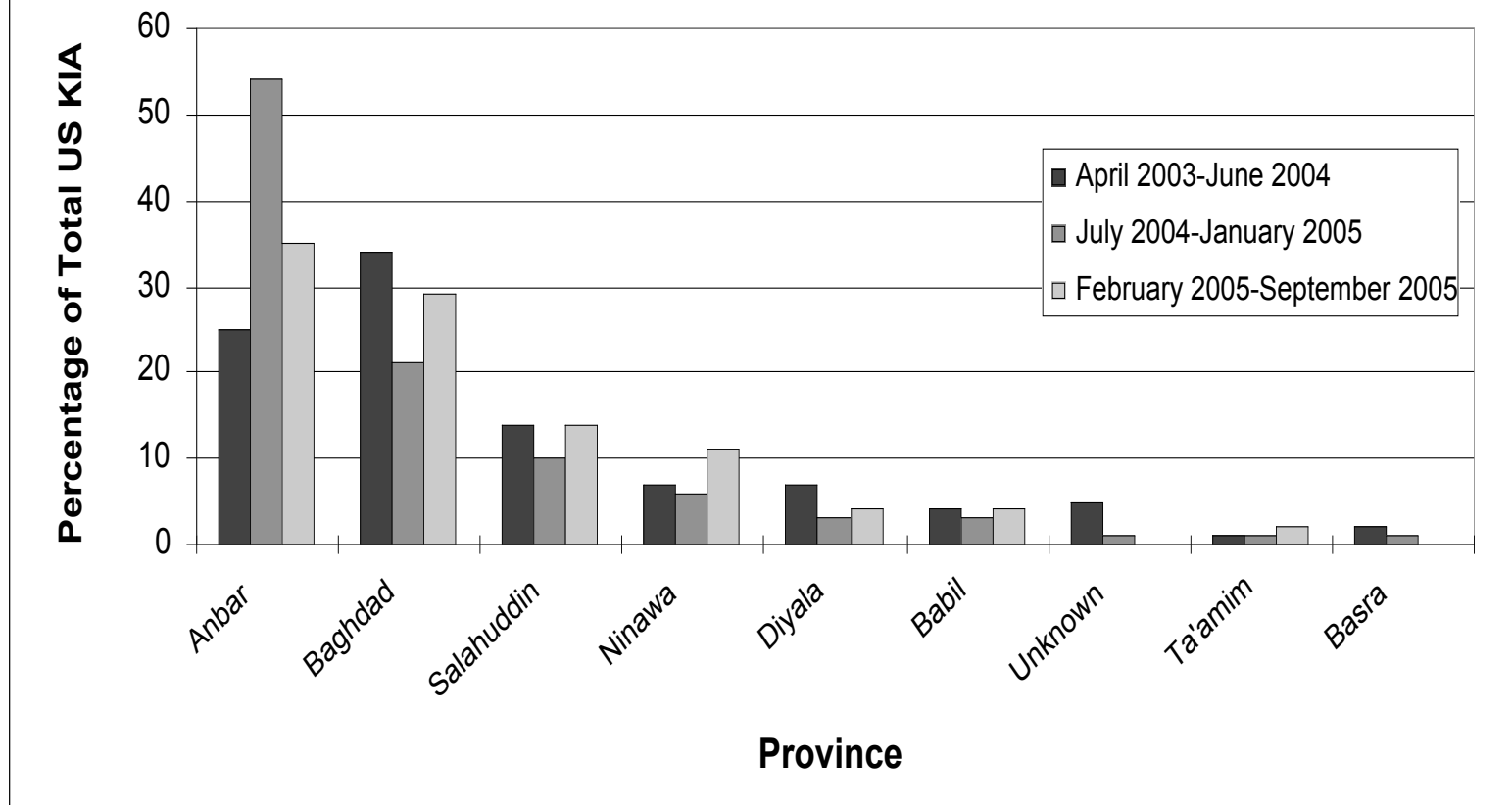


Geographic Distribution of US Killed in Action (KIA):

April 2003-June 2004 Transfer of Authority

July 2004 -January 2005 Elections

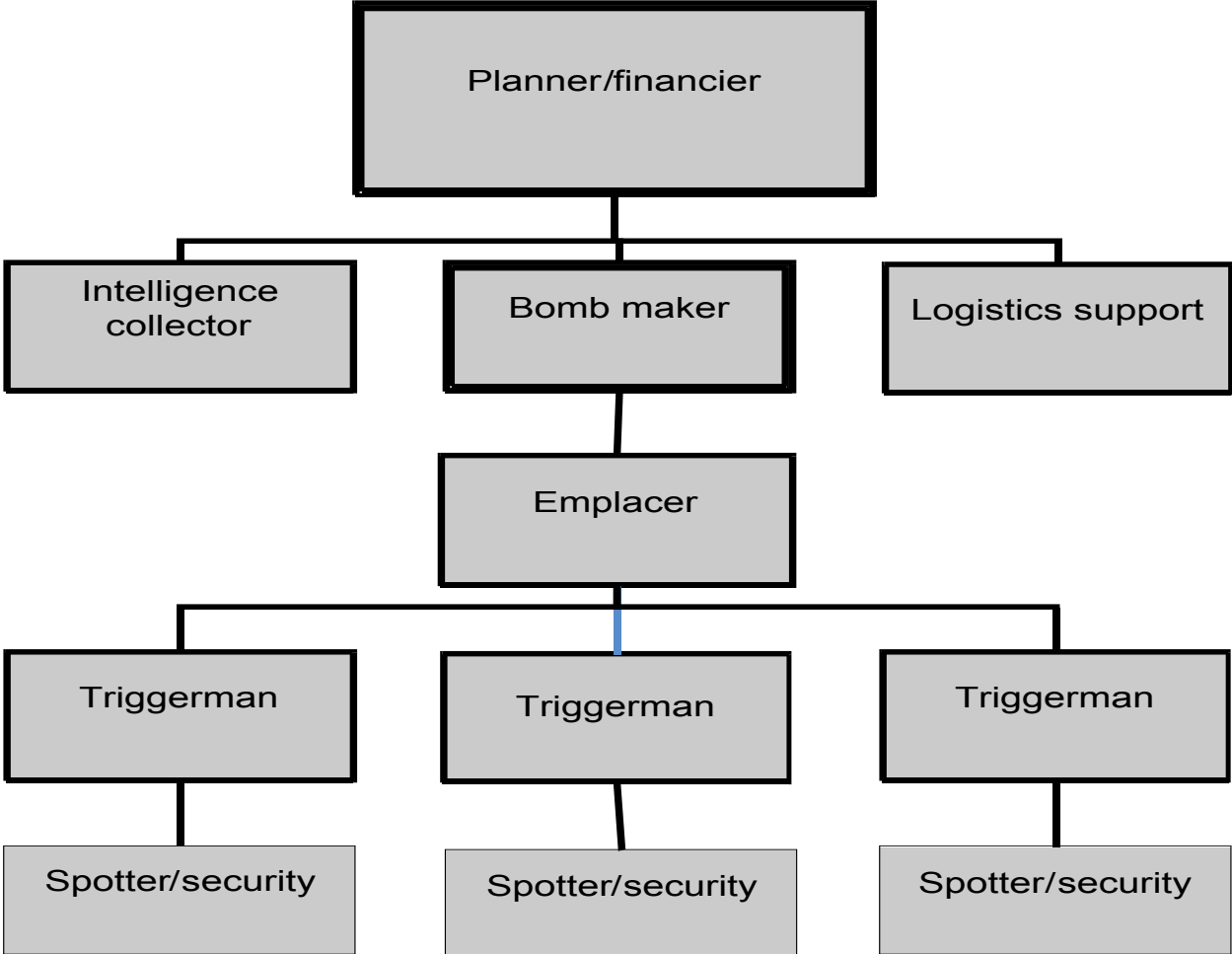
February 2005-September 2005



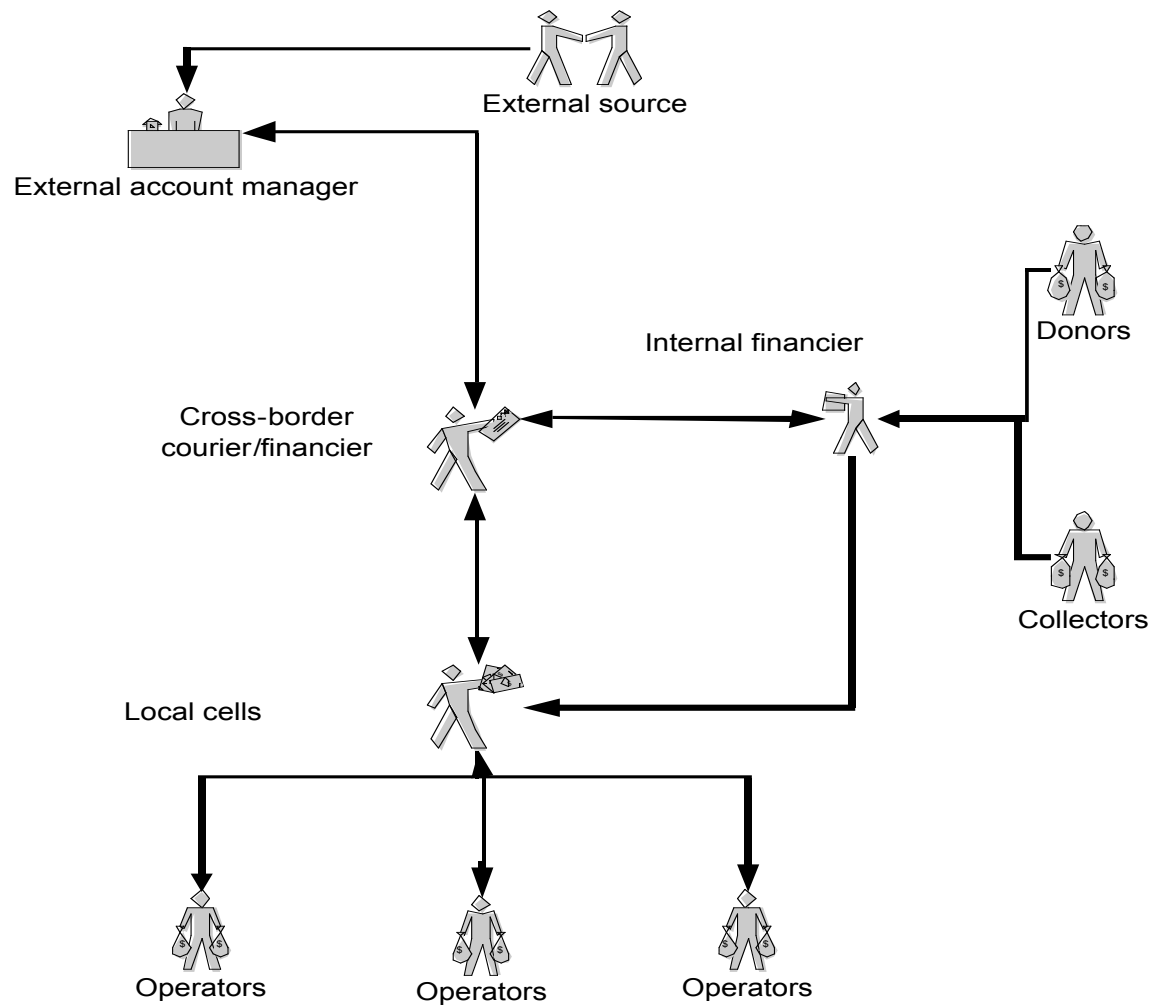
By Jeffrey White

Copyright 2005 The Washington Institute

A notional IED cell



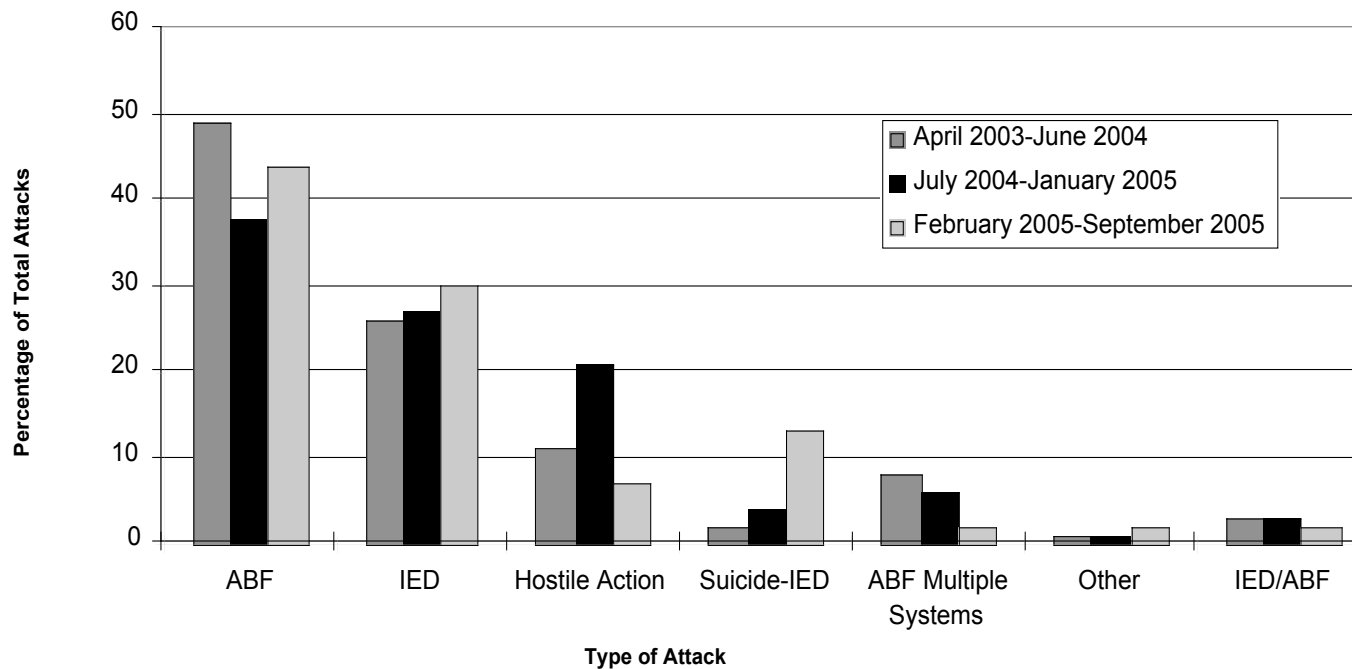
Representation of insurgent financial operations



By Jeffrey White

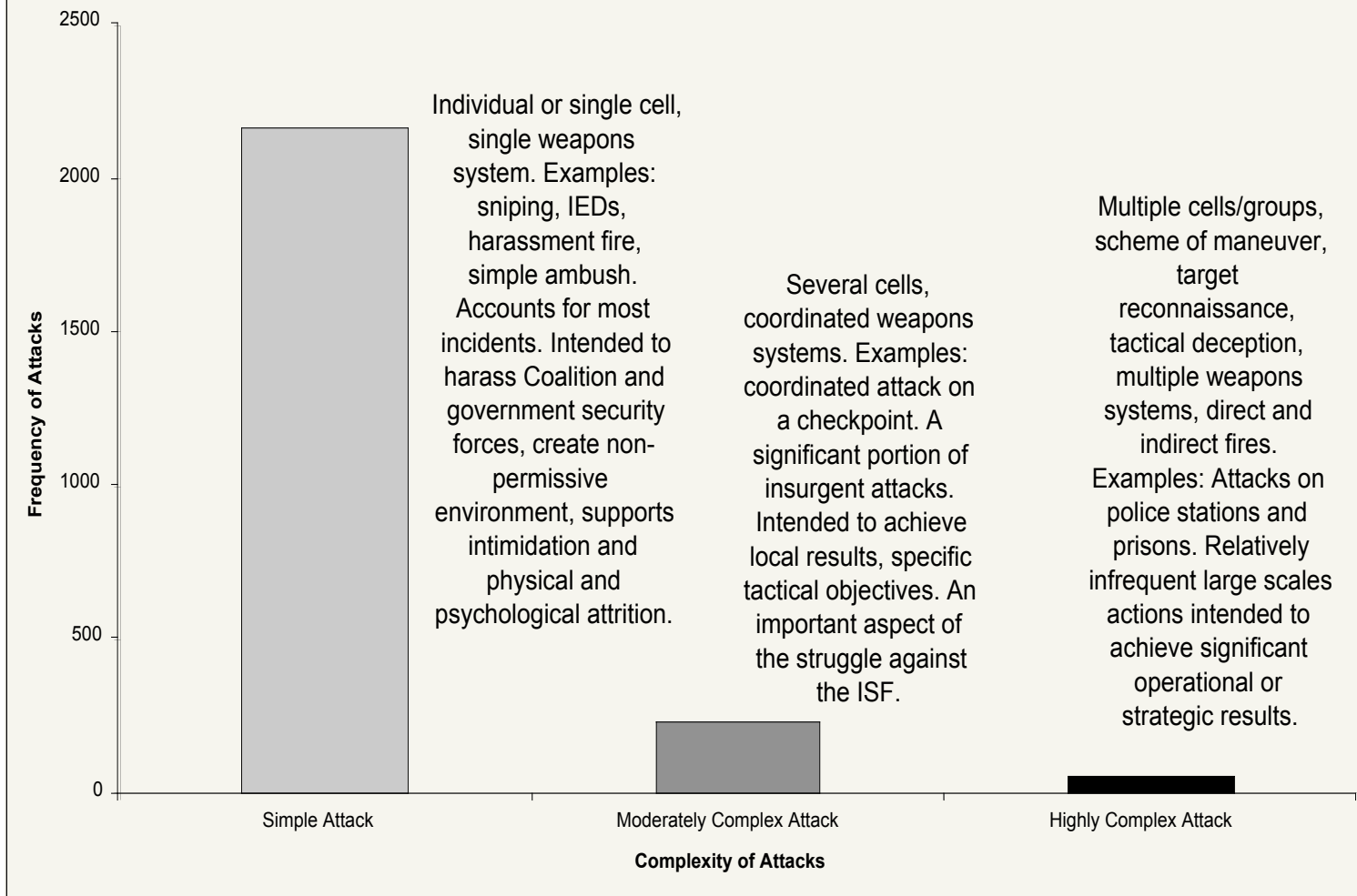
Copyright 2005 The Washington Institute

Attacks by Type of Weapon:
April 2003-June 2004 Transfer of Authority
July 2004-January 2005 Elections
February 2005-September 2005

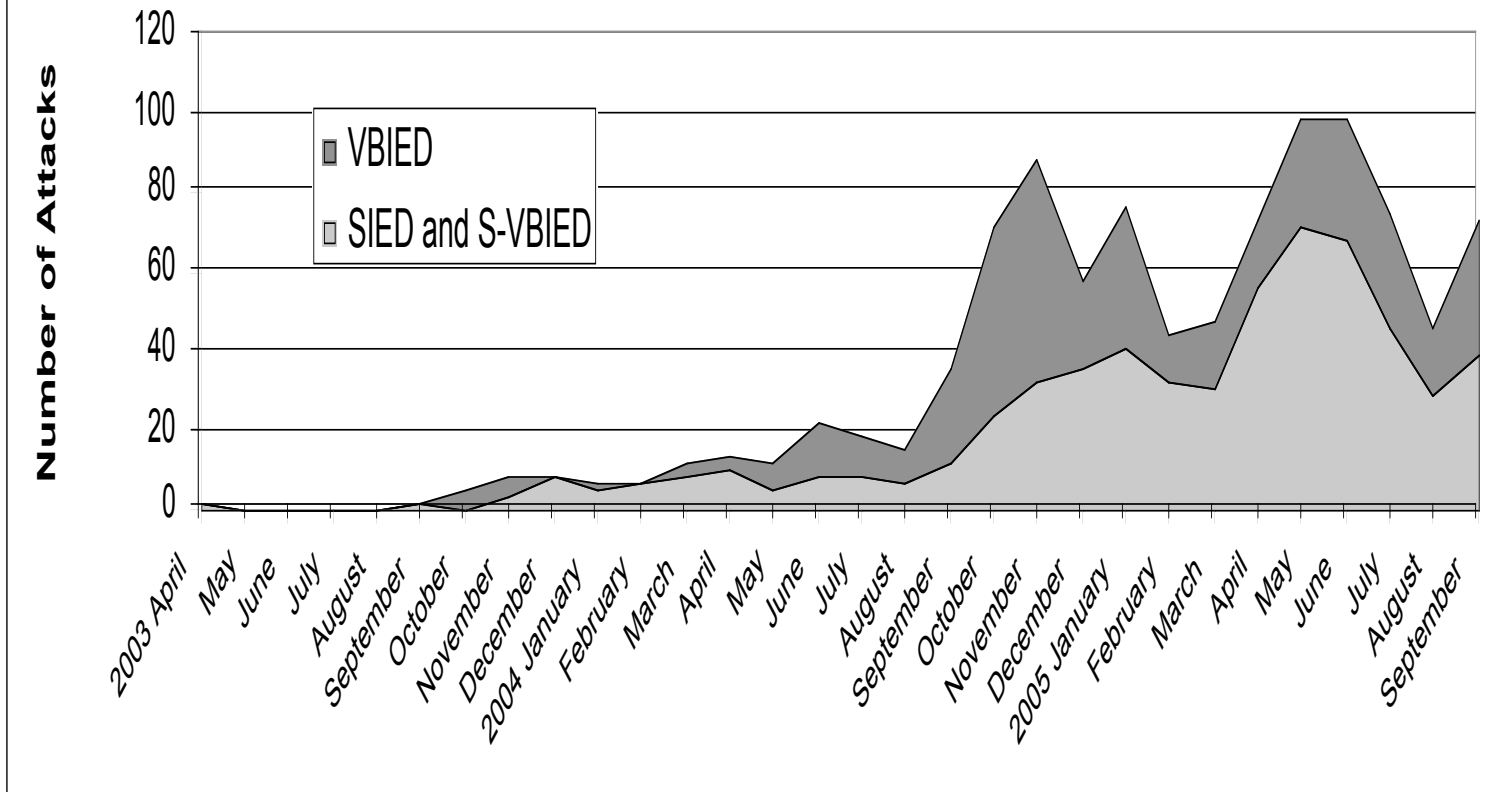


ABF : attack by fire--includes small arms, rocket-propelled grenades and mortars
IED : improvised explosive device--includes roadside bombs and vehicle-borne explosive devices
Hostile Action : unknown weapon system
Suicide-IED : includes suicide belt/vests and vehicle-borne suicide attacks
ABF Multiple Systems : attacks involving at least two ABF systems
Other : includes grenades, poison, decapitation, rockets, molotov cocktails, knifings and kidnappings

Relationships Among Tactical Complexity, Frequency and Purpose of Insurgent Attacks: February to August 2005



Suicide-IED, Vehicle-Borne IED and Suicide Vehicle-Borne IED: April 2003-August 2005



By Jeffrey White

Copyright 2005 The Washington Institute